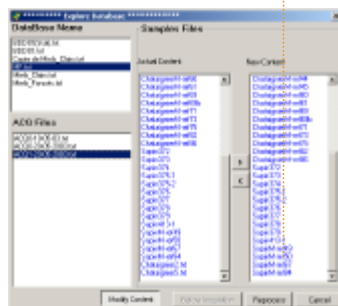


EasyPeak *is more...*

For Windows

Database manager : a tool for database managing

After each acquisition, it can be interesting to update the reference databases with new samples which merit to be stored or removed. *EasyPeak* provides a simple tool to perform this task. The database manager uses history files to maintain the reference databases.



On-line & Off-line applications

With *EasyPeak*, you can make simultaneously data managing and data acquisition thanks to the OFF-LINE application. Indeed, *EasyPeak* can be started twice by the user: the first program will be dedicated to data acquisition from analytical instruments and the second should be used for data treatment and database managing.

and more...

www.easypeak.com
easypeak@easypeak.com

Why should you think now to *EasyPeak* ?

Generally, analytical software are not designed and implemented by final-users. Therefore, they are too much complex and often not completely adapted to the users' needs.

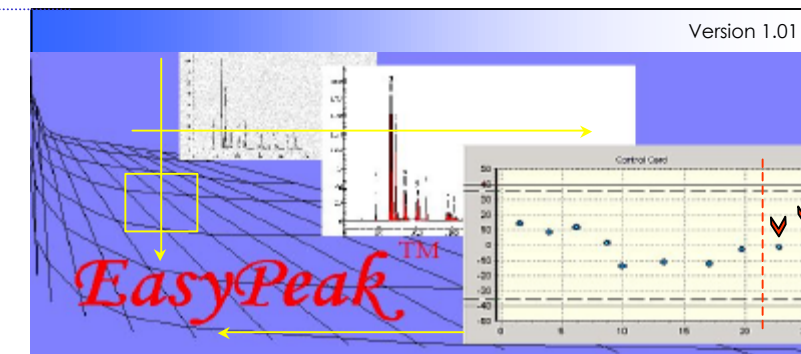
EasyPeak is a software designed by chemists for chemists and we tried to integrated all our experience of software utilization.

Efforts have been used to :

- simplify the software interfaces,
- furnish the final expected information proceeding from data analysis,
- integrate the analytical approach shared by analytical laboratories.

EasyPeak *is more...*

For Windows



Automate your food quality controls by using chromatographic data and chemometrics in a single application.



easypeak@easypeak.com



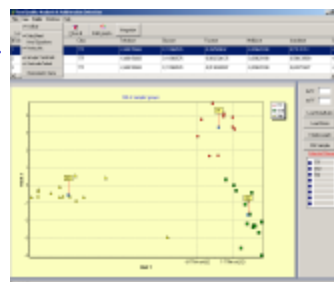
EasyPeak

For Windows

Your center of interest is food quality control or raw material checking in food industry. You need to monitor your production or the production of your suppliers by chromatographic instruments.

OK! *EasyPeak* is the best solution for you !

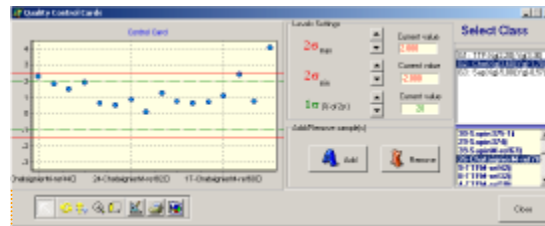
EasyPeak acts of problems of analysis and quality control of food. It provides a reliable and fast evaluation of the quality of a sample starting from his chromatogram without passing by traditional peak-to-peak integration. *EasyPeak* also deals with the automation of this analysis by integrating an efficient data processing without getting call of other external software and by presenting the results in graphical forms in order to make the interpretation simpler and faster.



Easy to use graphical interface

www.easypeak.com

easypeak@easypeak.com



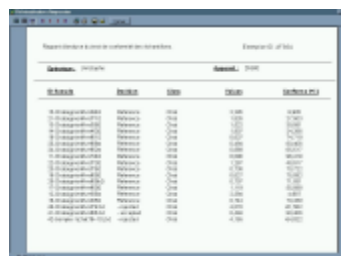
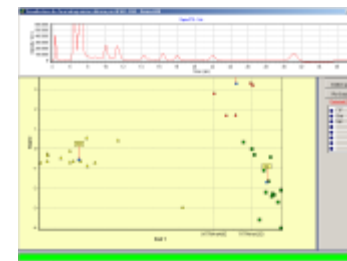
Quality control chart :

an easy access to the sample features

Based on a multivariate procedure (linear discriminating analysis: LDA) *EasyPeak* provides a graphical tool for a real-time determination of the quality of samples: the "Quality Control Chart" allows the user to check the conformity of acquired samples in respect with the reference database.

Raw data access : an easy access to the original chromatograms

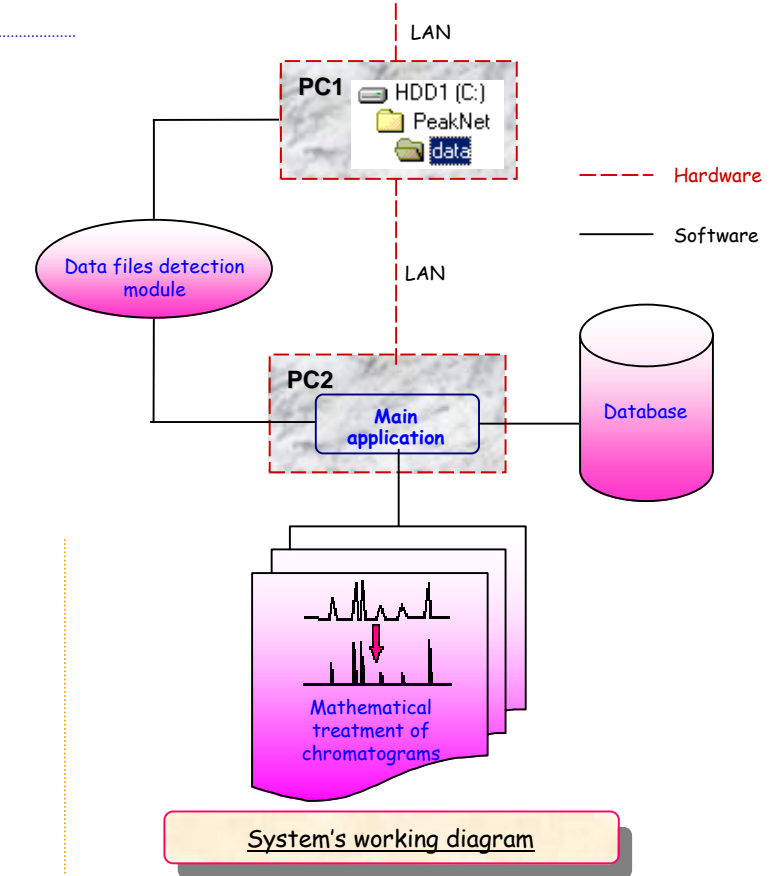
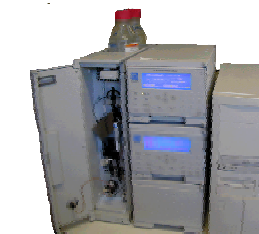
From the discriminating analysis plot, *EasyPeak* gives a direct access to raw data (original chromatograms) with just a simple mouse right-click onto the sample points. Immediately, the sample chromatogram appears in a popup window and allows comparison between samples.



Sample	Reference	Score	Conformity
1	2	0.95	OK
2	3	0.85	OK
3	4	0.75	OK
4	5	0.65	OK
5	6	0.55	OK
6	7	0.45	OK
7	8	0.35	OK
8	9	0.25	OK
9	10	0.15	OK
10	11	0.05	OK

Automated reporting : an efficient tool for analyses reporting

In only one click *EasyPeak* builds and displays a synthetic analysis report clearly showing the acquired samples and the reference samples belonging to the current database. The report also presents the conformity level of the acquired samples with respect to those of reference database.



easypeak@easypeak.com

